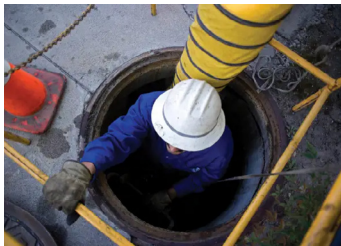


# FACT SHEET: Confined Spaces

## Safe Practices and Guidelines



Certain job tasks may require employees to enter tight or cramped spaces to perform work activities. Because of the inherent hazards associated with confined spaces, OSHA has divided these spaces into two main categories: Confined Spaces and Permit-Required Confined Spaces (see Figure 1 below). To protect workers from hazards associated with Permit-Required Confined Spaces, OSHA created a standard to address the requirements for classification, safe entry, and rescue.

### NEED TO KNOW:

1. Permit-Required Confined Spaces contain serious health and safety hazards and require specialized training and equipment for safe entry.
2. **NEVER** enter a Permit-Required Confined Space **unless you are authorized to do so by OEHS.**
3. All Permit-Required Confined Spaces must be secured and have signage to identify them.
4. If you identify a space that may meet the definition of a Permit-Required Confined Space that has no visible signage, **DO NOT ENTER** the space and contact OEHS immediately.

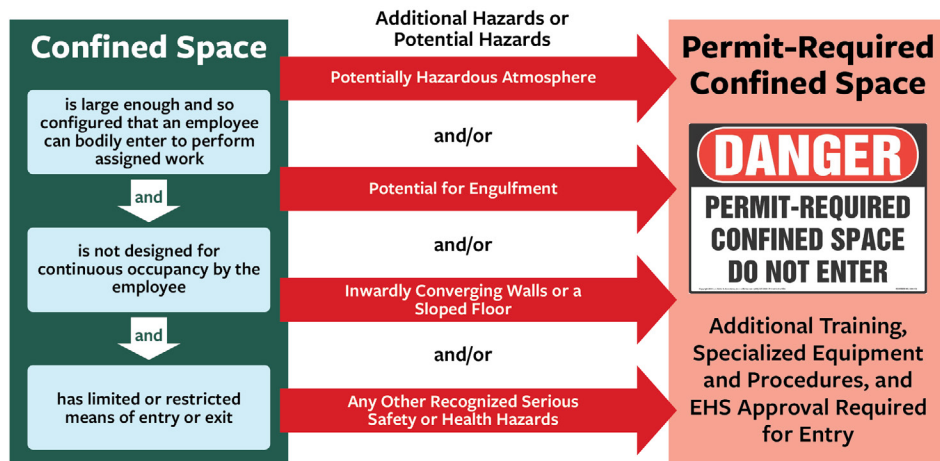
### HOW ARE PERMIT-REQUIRED CONFINED SPACES DIFFERENT?

A Permit-Required Confined Space meets the criteria for a Confined Space AND contains one or more of the following:

- Potential to contain an explosive, toxic, or otherwise hazardous atmosphere.
- Material with the potential to engulf someone who enters the space like water, sludge, or pellets.
- Internal configuration that might cause an entrant to be trapped or asphyxiated by inwardly converging walls or by a floor that slopes downward and tapers to a smaller cross section.
- Any other recognized serious safety or health hazards (e.g., exposed electrical components, unguarded machinery, thermal hazards, fall hazards, etc.).

Introducing additional hazards may transform a Confined Space into a Permit-Required Confined Space.

FIGURE 1:



### MORE INFO:



### ! PERMIT-REQUIRED CONFINED SPACES:

These spaces are identified with signage around the points of entry.

- Acid Neutralization Tanks
- Sewer Pits
- Condensate Pits
- Elevator Pits
- Boilers
- Water Tanks
- Fuel Tanks
- Hazardous Exhaust Plenums
- Compactors
- Dock Leveler Pits

### ADDITIONAL RESOURCES:

- OSHA: [Confined Spaces General Industry Standard](#)
- OSHA: [Permit-Required Confined Spaces](#)