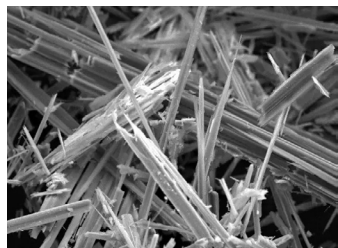


FACT SHEET: Asbestos

Awareness and Protection



Asbestos is a naturally occurring mineral which is resistant to heat, electricity, chemicals, and corrosion. Because of these properties, and its low cost, asbestos was used in a wide variety of products and building materials up until the early 1980s. Asbestos is only harmful when it is disturbed or damaged, causing the fibers to become airborne. Airborne asbestos fibers are microscopic and can be inhaled into the lungs where they become trapped, and lead to chronic lung disease and cancer.

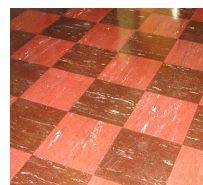
NEED TO KNOW:

1. Only OEHS and approved contractors are authorized to handle asbestos at OEHS.
2. Contact OEHS before starting any work involving or near known or potential asbestos.
3. Never disturb or attempt to clean up any suspicious material.
4. Report any concerns to OEHS at (504)-988-5486 or email OEHS at oehs@tulane.edu.
5. Refer to [Tulane Asbestos Management Guidelines](#) for more information.

MATERIALS CONTAINING ASBESTOS:

Asbestos was used in many products and building materials in the U.S. from 1866 to 1981, which can include:

- Pipe insulation
- Fireproofing
- Floor tiles/floor tile adhesive (mastic)
- Plaster, cement, putties and caulk
- Lab benches
- Roofing materials
- Fire doors



Floor Tile - Non-Friable



Pipe Insulation - Friable

The potential for a material containing asbestos to release fibers depends on whether or not it is friable. Friable means that the material can be crumbled with hand pressure. Friable materials release fibers into the air much easier than non-friable materials.

RECOGNIZING DAMAGED OR EXPOSED MATERIAL:

Damaged or exposed friable material must be encapsulated or abated by Tulane Facilities or an approved and licensed contractor. Damage or deterioration can take several forms including:

- Compromised outer layer
- Water damage
- Exposed material
- Visible debris/dust

ONLY intact undisturbed ACM can be safely left in place when in good condition.

! HEALTH EFFECTS ASSOCIATED WITH ASBESTOS EXPOSURES:

- Asbestos related diseases normally take anywhere from 20 to 40 years to develop.
- Asbestosis is a chronic lung disease caused by inhaling asbestos fibers. Prolonged exposure to these fibers can cause lung tissue scarring and shortness of breath.
- Mesothelioma is a type of cancer that occurs in the thin layer of tissue that covers the majority of your internal organs (mesothelium).
- Cancers of the lungs, esophagus, stomach, colon, and rectum have also been linked to asbestos exposure.
- The combination of smoking and asbestos exposure is particularly hazardous. Smokers who are also exposed to asbestos have a risk of developing lung cancer that is greater than the individual risks from asbestos and smoking added together.

MORE INFO:



ADDITIONAL RESOURCES:

- Tulane University: [Asbestos Management Guidelines](#)
- OSHA: [Asbestos in General Industry](#)
- OSHA: [Asbestos in Construction](#)
- OSHA: [Asbestos Fact Sheet](#)