

FACT SHEET: Proper Lab Attire

Personal Protective Equipment (PPE) such as lab coats, gloves, and safety glasses/goggles are worn in labs to protect workers from Chemical Splashes. In addition to PPE, the clothing that is worn in a lab provides an extra layer of protection from a potential Chemical Splash. For areas of the body not protected by standard lab PPE, such as lower legs and feet, clothing is the only barrier to direct contact with spilled or dropped chemicals. Wearing the appropriate attire is **REQUIRED** in all lab spaces and must be worn before entering the lab.

✓ Appropriate Lab Attire Includes

Shirt

Must fully cover the torso and upper arms, including stomach, lower back, and shoulders.



Pants

Full length. Must cover the upper and lower legs.



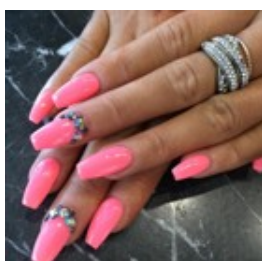
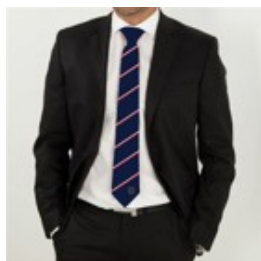
Shoes

Solid leather or equivalent low-permeability material that tends to shed liquid. Must completely cover the foot.



Inappropriate Items

- Remove or tie back long hair, jewelry, ties, or scarves. Draped or dangling items can knock over lab items or be contaminated.
- Acrylic Nails are flammable and not appropriate near heat or flames
- Large rings or long nails can damage lab gloves



Clothing Material

All clothing must be made of a solid material that covers the skin (no mesh, no large holes). Wear clothing that protects as much of the body as possible. During hot weather, bring lab clothes with you and change before entering the lab.



MORE INFO:



ADDITIONAL RESOURCES

- [Tulane Chemical Hygiene Plan](#)
- [Prudent Practices in the lab](#)



TULANE UNIVERSITY
Office of Environmental
Health & Safety
OEHS@tulane.edu